



Ms-Windows 10 and Latest Application of Computer

In this chapter, you will learn about :

- Transfer the data into a pen drive
- Transfer the data onto a CD
- Know the advanced application of computer with windows

Children! You are already familiar with the various devices on which we can store data. The primary one of course, are the RAM and ROM. Secondary storage devices are required when we want to store our work on a pen drive and a CD.

The various secondary storage media are :

1. Floppy disk



Floppy Disk

2. CD-ROM



CDs

3. DVD



DVD

4. Pen drive



Pen Drive

Know More

In our daily life, we use many storage devices like cupboard, book shelf, refrigerator school bag etc. Similarly, a computer uses various storage devices that vary in storage capacity e.g. - floppy disk, CD, DVD etc. These are permanent or non-volatile storage devices.

Let's learn how to save our work on a pen drive.

SAVING FILE ON A PEN DRIVE

Follow the given steps :

- Step 1 :** Insert a pen drive in the USB port of your computer.
- Step 2 :** Right click the 'file' that you want to save on the pen drive.
- Step 3 :** A drop down menu appears. Click on 'copy'.
- Step 4 :** Now, double click on the My computer icon.

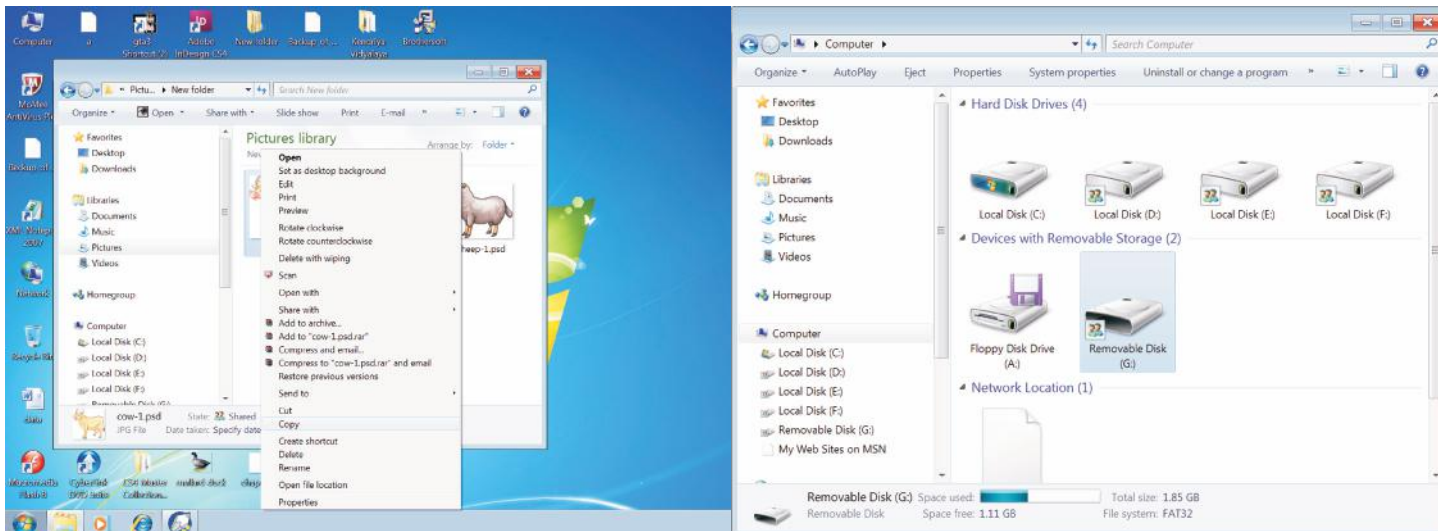
A window opens up with all the drives installed on your computer.

Know More

Pen drives are faster, hold more data and are more reliable than floppy disks.



Step 5 : Double click on the icon showing the pen drive.



Step 6 : A window opens and shows the existing content. Right click anywhere, a menu appears. Select paste.

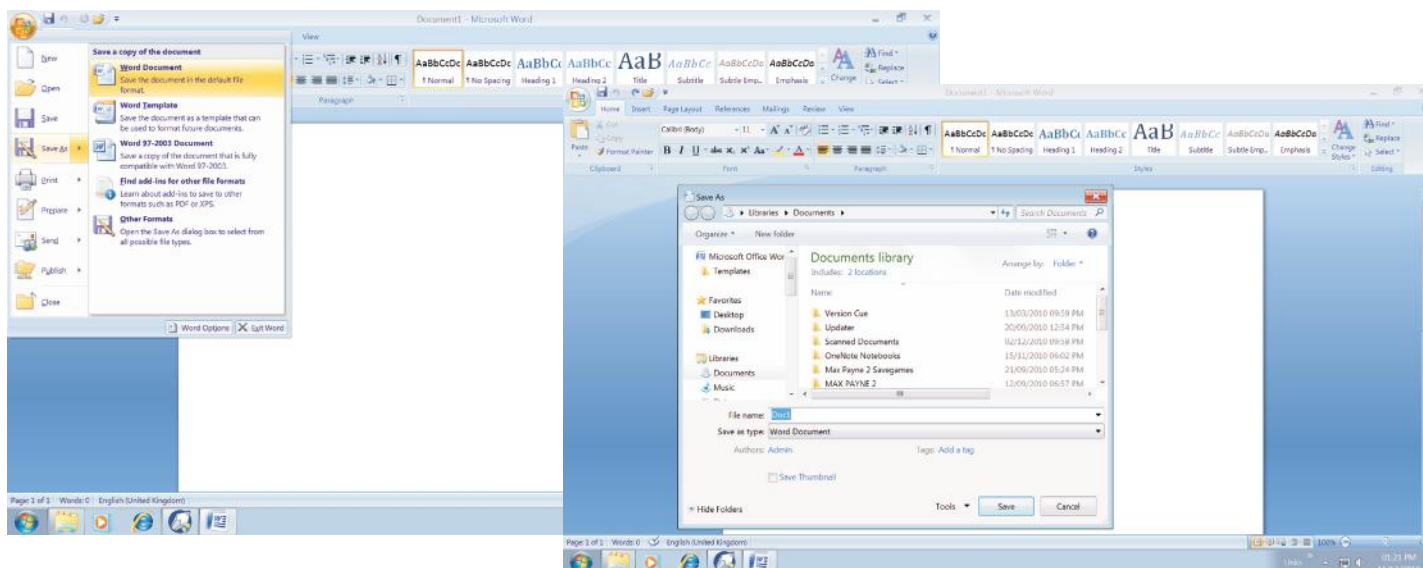
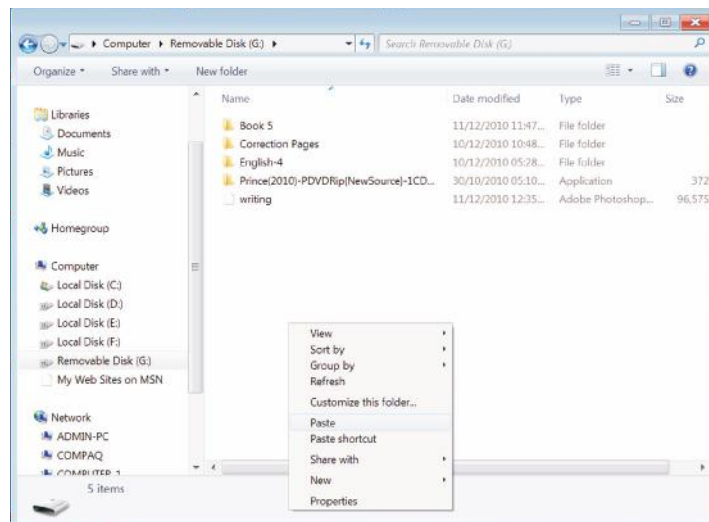
Step 7 : The file that was copied get transferred onto your pen drive.

Another method to save your work on a pen drive is to open the file first. The choose save as from the File menu.

Step 1 : A 'save as' dialog box appears.

Step 2 : Locate the pen drive and click on 'open'.

Step 3 : The 'save as' dialog box shows you the contents of the pen drive. Select the place where you want to save your file and click on 'save'.



SAVE FILE ON A CD OR DVD

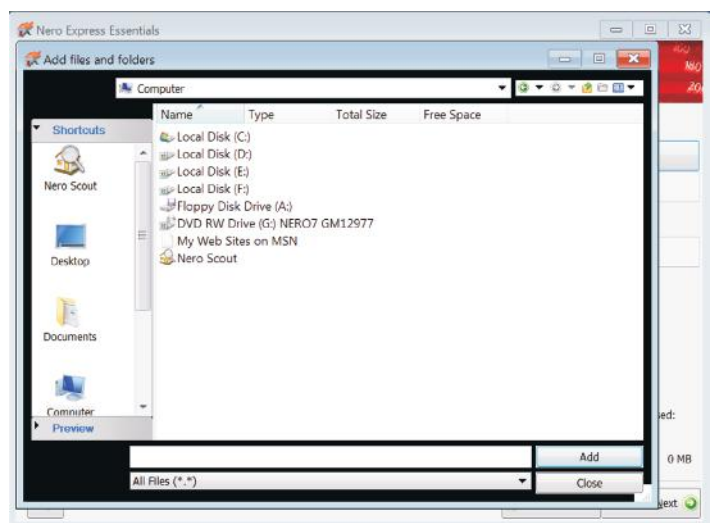
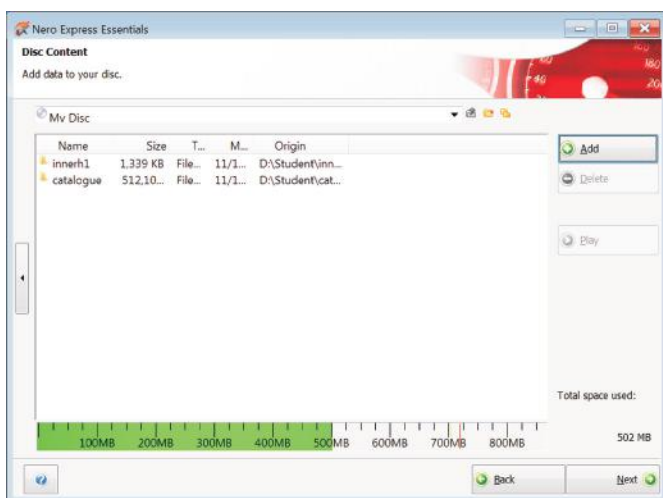
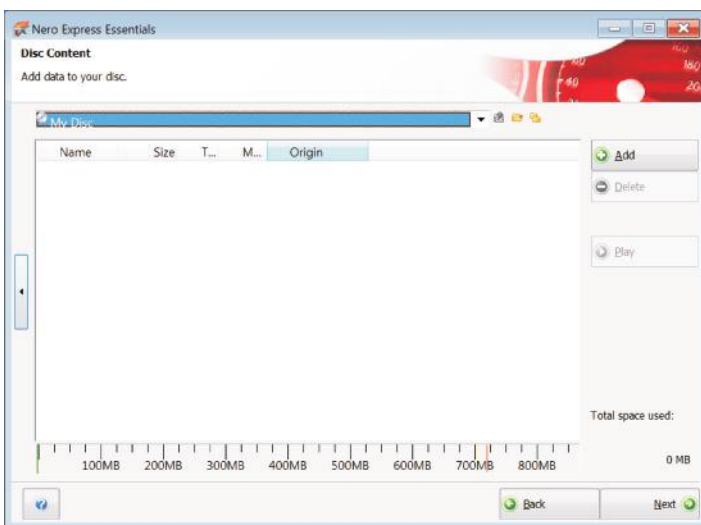
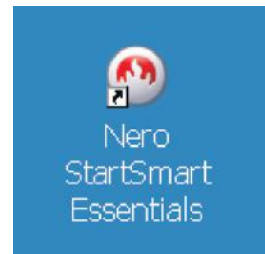
It is essential to keep a backup of the data we feed into our computers. If the computer crashes, all data is lost. To save the files on a CD, special software like Express Burn, Nero AG, Pyro, Roxio Creator etc. is required. CD burning (writing) software makes copying important data easy and fast. Follow the steps to burn a CD or DVD.

Step 1 : Double click on the CD or DVD writer program Nero icon on the desktop. It opens a window.

Step 2 : If you write CD, then select CD from the drop down menu or if you write DVD, then select DVD that appears on the top, and then click on Make Data CD.

Step 3 : A Nero Express Essentials dialog box opens up. Click on Add.

Step 4 : A dialog box opens. Locate the files in the computer and select one or more files that you want to copy to the CD. Click on Add. Once you have added the files, click on close.



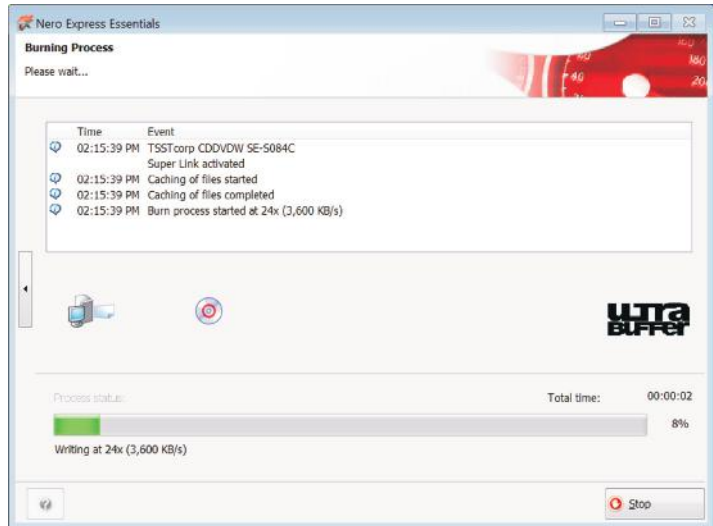
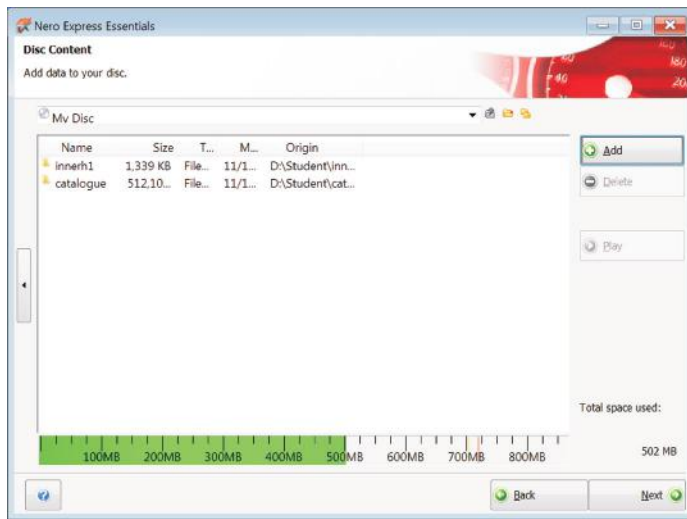
Step 5 : The selected files get copied, ready to be burned on to the CD.

Step 6 : Click on Next.

Step 7 : Check the two boxes given there. This will verify once your data is burned on to the CD and will allow you to add data later in the same CD.

Step 8 : Click on burn.

Step 9 : The burning process starts.



Step 10 : Once the CD burning process is complete, a message will indicate the successful completion of the process. Click on O.K. Your CD automatically comes out.

Step 11 : Click on Next.

Step 12 : Click on the close button to close the application.

Know More Burning data is the process of recording of a sequence of tracks or set of data on to a blank CD in Red Book format.

ADVANCED APPLICATIONS OF A COMPUTER

Computers are the foundation of daily life today. The quick services you expect at the bank, at the supermarket, and on the Internet is dependent on the speed of computer. Can you imagine our world without computer?

Some latest applications are given below :



Touch Screen with Windows

A touch screen is a display which can detect the presence and location of a touch within the display area. Inputs are given by simply touching the right option. There is no need of a mouse or a keyboard. This is commonly used in ipods and mobile phones.

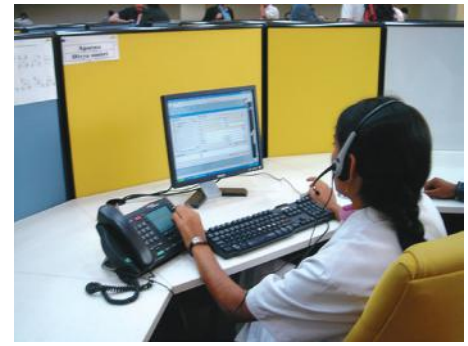
ATM

The full form of ATM is Automated Teller Machine. ATM helps you to take out money around the clock. To do transactions through an ATM, you need an ATM card. The card has a thin magnetic strip which is interpreted by the computer fitted inside the ATM machine. Inputs are given by pressing buttons or sometimes by the means of touch screen.



Voice Recognition

People think that computer is a complicated machine that involves a lot of clicking and dragging for doing work. But today, there are computers specially programmed to respond to spoken commands. There are various voice recognition softwares that help the computer to recognize the voice commands as inputs given to it and process information based on these commands to give an output clicking and dragging is not required as the voice



Know More

Many BPO companies use sound recognition softwares that minimise the usage of keyboard and mouse.

recognition software takes the input through sound waves. The only limitation of this application is that the accent in which the voice command is given, has to match the one that has been recorded in the software.

Points to Remember

- It is important to keep a back up of the data that is stored on the hard disk of your computer.
- We can copy the files on a computer hard disk to secondary storage devices like a pen drive or CD.
- Special CD-burning software is required to copy files from the computer onto a CD.
- We should not disrupt the CD-writing process at any stage.
- The computer is finding its applications in many fields. The most recent ones involve touch screen, ATMs and voice recognition systems.

EXERCISE



A. Tick (✓) the correct option :

1. Which software is used for CD- writing?

(a) Nero Express (b) Outlook Express (c) Browser

2. ATM stands for _____.

(a) Automated Teller Machine (b) Automatic Tought Machine

(c) Automatic Teller Machine

3. Pen drive are faster than _____.

(a) DVD (b) CD (c) Floppy

4. The process of recording data onto CD is called _____.

(a) Formatting (b) Copying (c) Burning

B. Fill in the blanks :

1. The primary storage devices of any computer are its _____.

2. The pen drive is inserted into the _____ part of the computer.



- Express Burn, Nero AG, Pyro etc. are special software used to save files on a _____.
- A pen drive is a _____ storage device.
- The process of recording data on to CD is called _____.
- ATM stands for _____.
- The _____ of an ATM card is interpreted by the computer inside the ATM machine for doing transactions.
- Voice recognition software takes input in the form of _____.

C. Write (T) for true and (F) for false :

- RAM and ROM is the primary memory.
- DVD stands for Dat Visual disk.
- We can disrupt the DVD writing at any stage.
- Nero Express software is used for CD or DVD writing.
- Burning data is the process of recording of a sequence of tracks or set of data outo a blank CD in red Book format.

D. Answer the following questions :

- Name some secondary storage media.
- Why should we always maintain a back up of the data on our hard drive ?
- Write the steps to transfer our files on to a pen drive.
- Write the steps to transfer files onto a CD.
- Name some special CD-burning software.
- Distinguish Pen drive and CD.
- Name some application areas of a computer.



ACTIVITY

- Go to the lab. Ask your teacher for a Pen drive and try to transfer any file from the desktop on to it.**
- Take a blank CD. Now try transferring some data from desktop.**
- Find out the places where you can find the application of computer in the from of touch screen and voice recognition other than those mentioned in this chapter.**

- _____
- _____
- _____
- _____