

# Photoshop

## In this chapter, you will learn about :

- Creating a new file, image size and resolution using Photoshop
- Know the working of tool box
- Editing the images in Photoshop

Photoshop is a graphical program that we use to create a new image or modify an existing one.

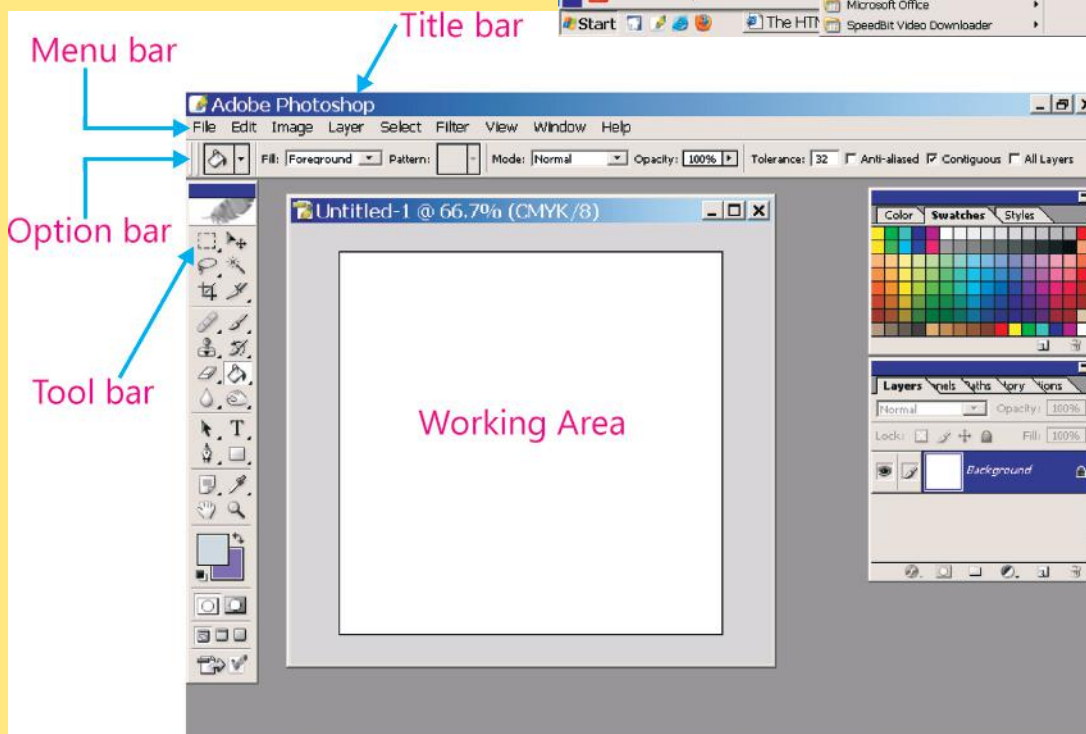
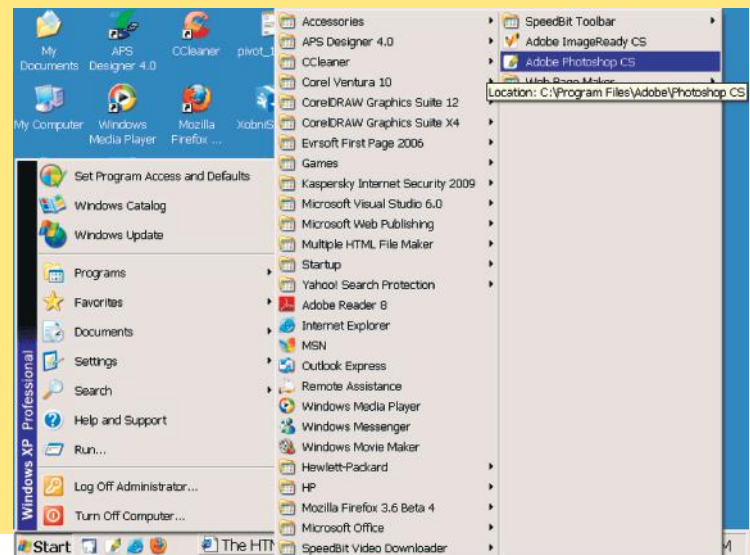
## HOW TO START PHOTOSHOP ?

**Step 1 :** Click on Start button.

**Step 2 :** Then click on Programs.

**Step 3 :** Choose Adobe Photoshop.

The Photoshop window opens up.

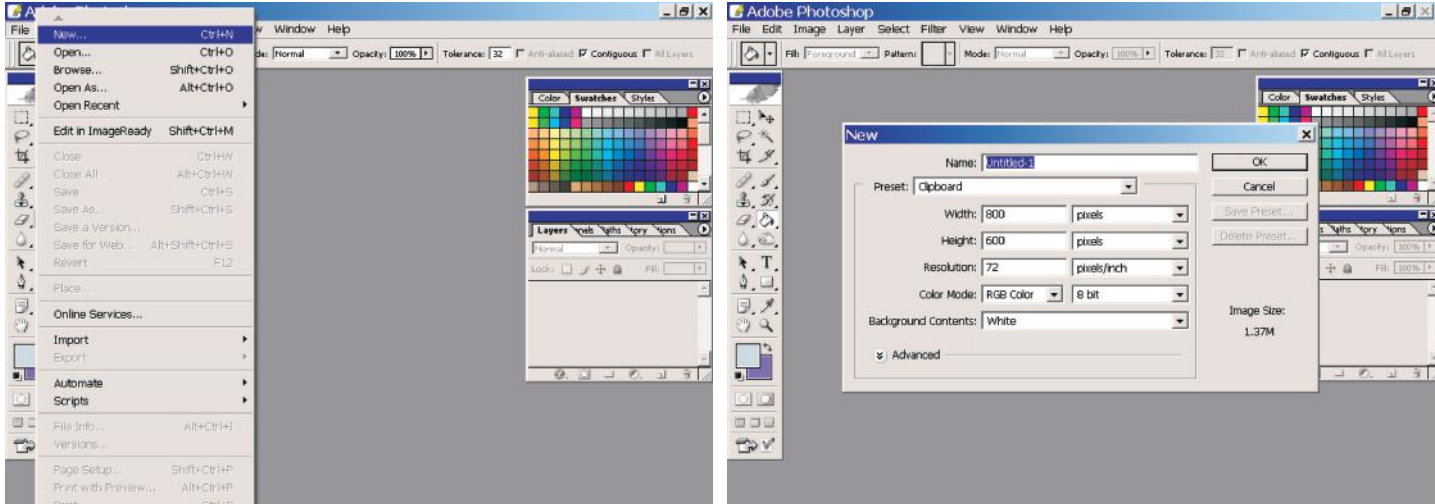


## CREATING A NEW FILE IN PHOTOSHOP

To create a new file :

**Step 1 :** Click on New from the standard toolbar, or click on New from the File menu.

**Step 2 :** A dialog box opens up for you to choose the setting for your new page, in terms of :



**Name :** It allows you to give a name to your file.

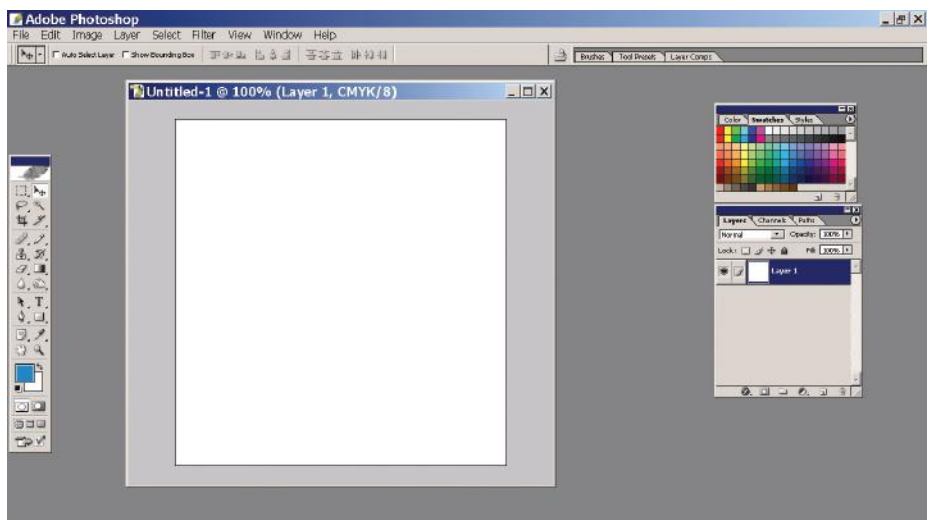
**Size :** Photoshop offers many preset size options. It even allows you to specify your own size by typing the required height and width. This however, requires selecting the unit of measurement too.

**Resolution :** (Number of pixels per inch or dots per inch) We should always remember that in high resolution images, we do not see pixels in the printout of the image. But a high-resolution image also requires a lot of memory space in the computer.

**Mode :** There are several options to choose from, like Bitmap, grayscale, RGB, CMYK, etc.

- In the bitmap mode, the image gets converted into a two colour image. To convert an image into bitmap mode, we need to first change it to grayscale.
- In Grayscale mode, the image is displayed in shades of gray, black, and white.
- In the CMYK mode, the printing's done in four main colours—C for cyan, M for magenta, Y for yellow, and K for Black, Different combinations of these four colours are used to make other colour.

After giving the desired specifications to the new page,

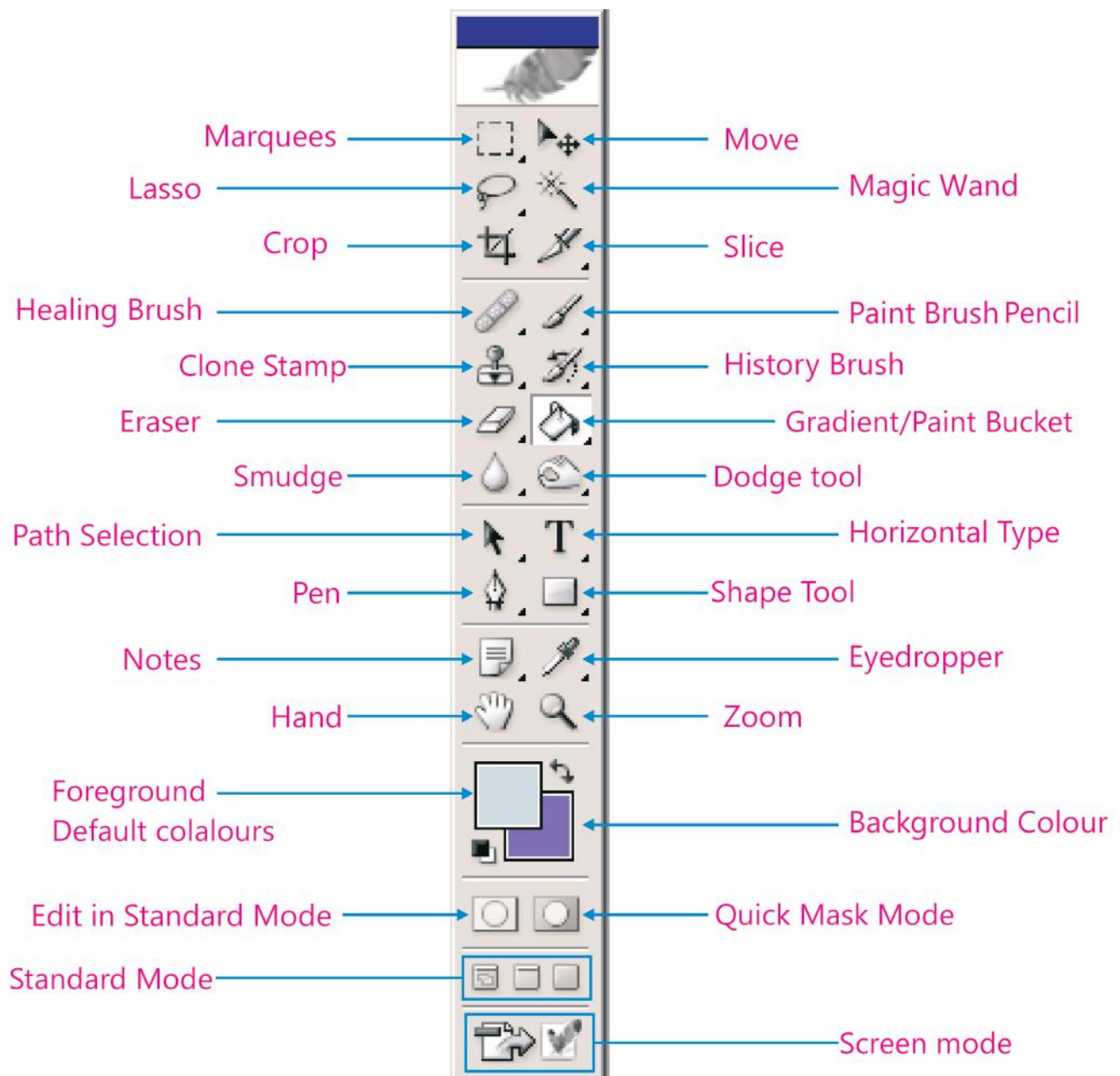


the Photoshop window opens up, with the toolbox on the left. It is floating toolbox *i.e.* we can move it to any place we want, by just dragging and dropping.

## THE PHOTOSHOP TOOLBOX

There are four kinds of tools in the Photoshop toolbox, which help us to create and edit images.


- 1. Selection tools :** There are three main types of selection tools—the Magic wand, the Marquee, and the Lasso.
- 2. Painting tools :** These include the Air brush tool, the Paint brush, the Rubber stamp, the Eraser, the Blur tool, Sharpen, Smudge, Dodge, Sponge etc.
- 3. View tools :** Hand tool and the Zoom tool are the main view tools.
- 4. Path, text and shape tools :** Besides these, there are many other tools that help us in various ways while working with images.



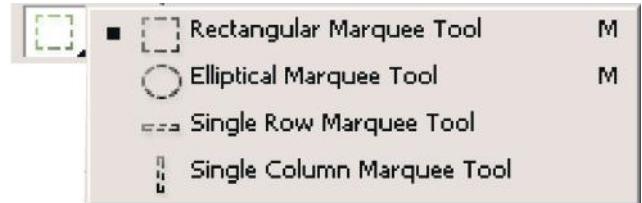
## Selection Tools

There are three selection tools in the Photoshop toolbox :

1. The Magic Wand tool
2. The Marquee tool
3. The Lasso tool

1. **The Magic Wand tool** : This helps us to select parts of an image, which are similar in colour. 

2. **The Marquee tool** : This helps to select a part, or parts of an image, when dragged over them. The portion, over which it is dragged, gets selected. There are different Marquee tools based on the shape, which can be chosen from the Drop down menu. Just right click on the Marquee tool to get the drop-down menu.



3. **The Lasso Tool** : This tool allows the free hand selection of a part of the image. There are three types of Lasso tools :



(i) **Simple Lasso** : It allows free hand selection with straight lines.

(ii) **Polygonal Lasso** : It allows free hand selection with both straight and curved lines.

(iii) **Magnetic Lasso** : This does free hand selection along the outline boundaries of the image.

To get the three options, just right click on the Lasso tool and open the drop down list

## Using Lasso

**Step 1** : Select the Lasso tool from the submenu.

**Step 2** : Click and drag the Lasso tool around the image area that you want to select.

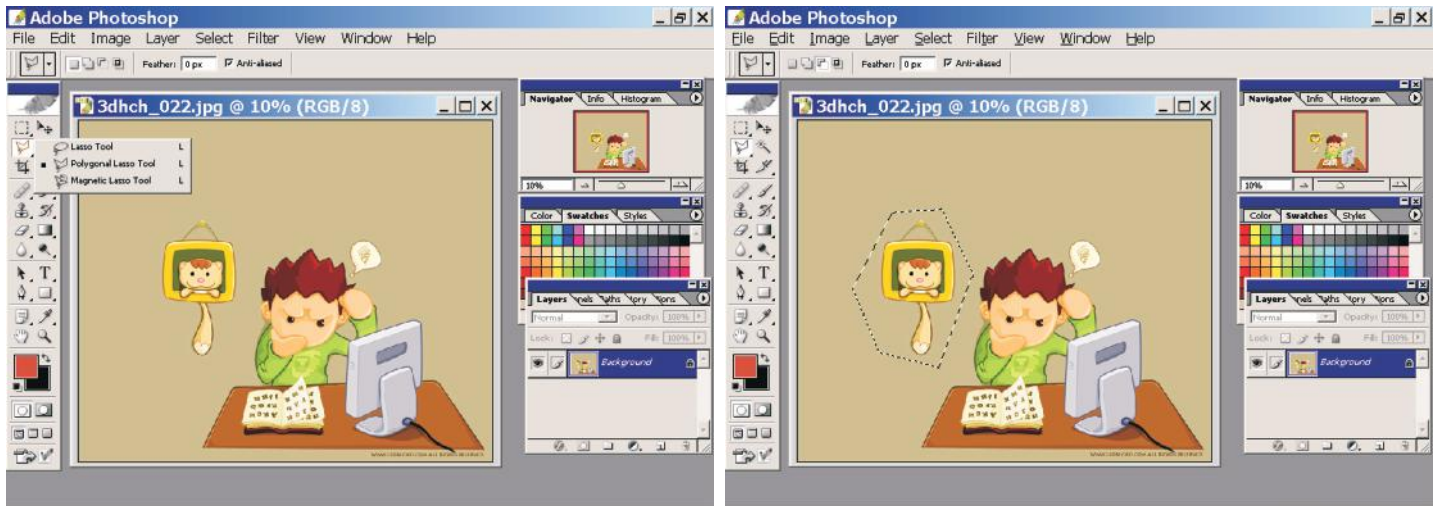
**Step 3** : Release the mouse when the image is completely selected to the extent you want.



## Using the Polygonal Lasso Tool

**Step 1 :** Select the Polygonal lasso tool from the sub menu.

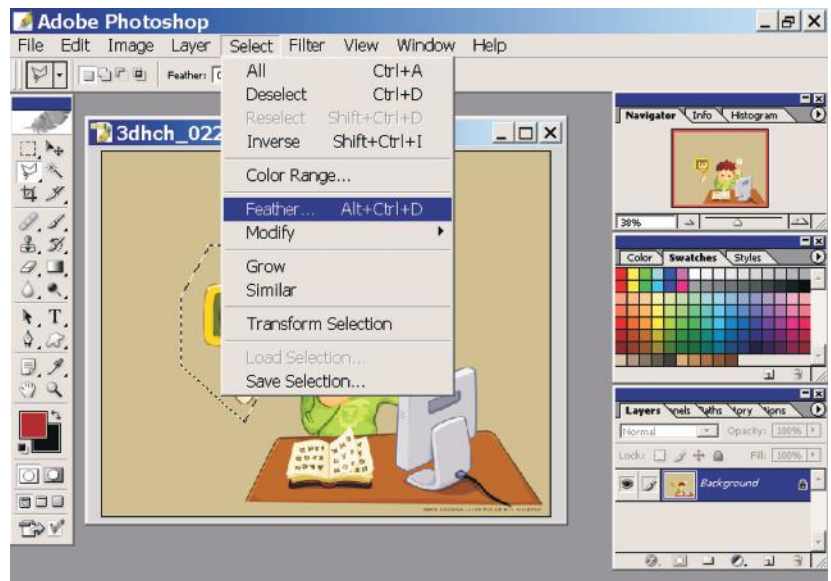
**Step 2 :** Click and draw a polygon shape around the image to select it, similar to the polygon shape in point.



You can smoothen the hard edges of a selection by Anti-aliasing, and by feathering.

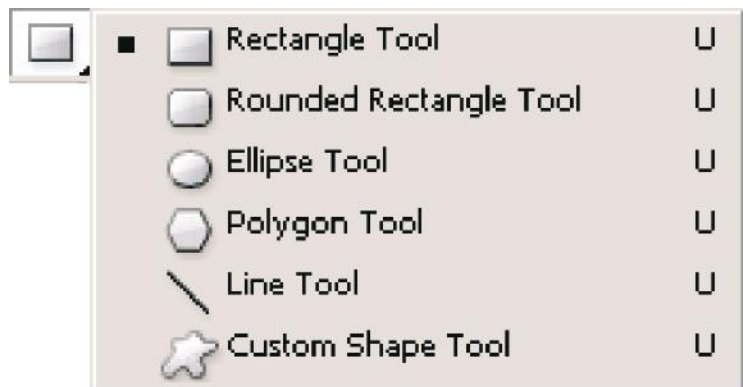
By anti-aliasing, we can smoothen the irregular edges of a selection. This is useful when we are creating multiple images by cutting, copying and pasting.

Before using the selection tool, one needs to specify and select the anti-aliasing tool, if one desires.



## Drawing Tools

We can even draw objects in Photoshop, just like in paint. To get tools to draw, right click on the rectangle tool. A drop down menu opens up, which allows you to choose the correct tool required for the shape that you want to draw. The drawing method is similar to that in paint.





## Using Custom Shape Tools

Photoshop comes with some pre-loaded shapes. They are found in the custom shape tool. To select a custom shape, we use the following steps :

**Step 1 :** Click on the drop-down arrow.

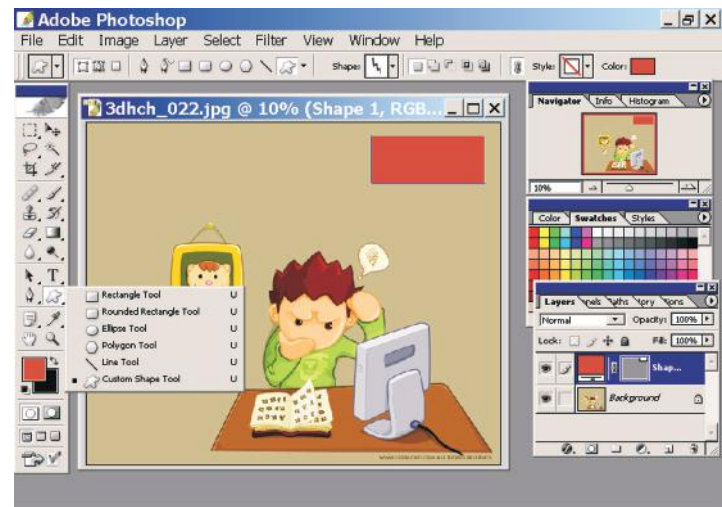
A box with drawing options opens up.

**Step 2 :** Select the custom shape tool. Click on the Drop-down menu next to shapes in the option bar.

A palette with a variety of shapes opens up.

**Step 3 :** Click and drag on the layer to draw the selected shape.

The shape is drawn and filled with the selected colour.



We can save any shape drawn on a layer as a custom shape by following some easy steps :

**Step 1 :** To save a shape or path as a custom shape, we choose define Custom Shape from the edit menu.

The new custom shape name dialog box appears.

**Step 2 :** Enter the name of the new shape.

This then gets saved in the custom shape library.

## LAYERS

In Photoshop, we work in layers. You can picture these layers like stocks of thin sheets piled one on top of the other. You can change the order of these layers, and add special features and effects separately in each layer, without disturbing the images on the order layers.

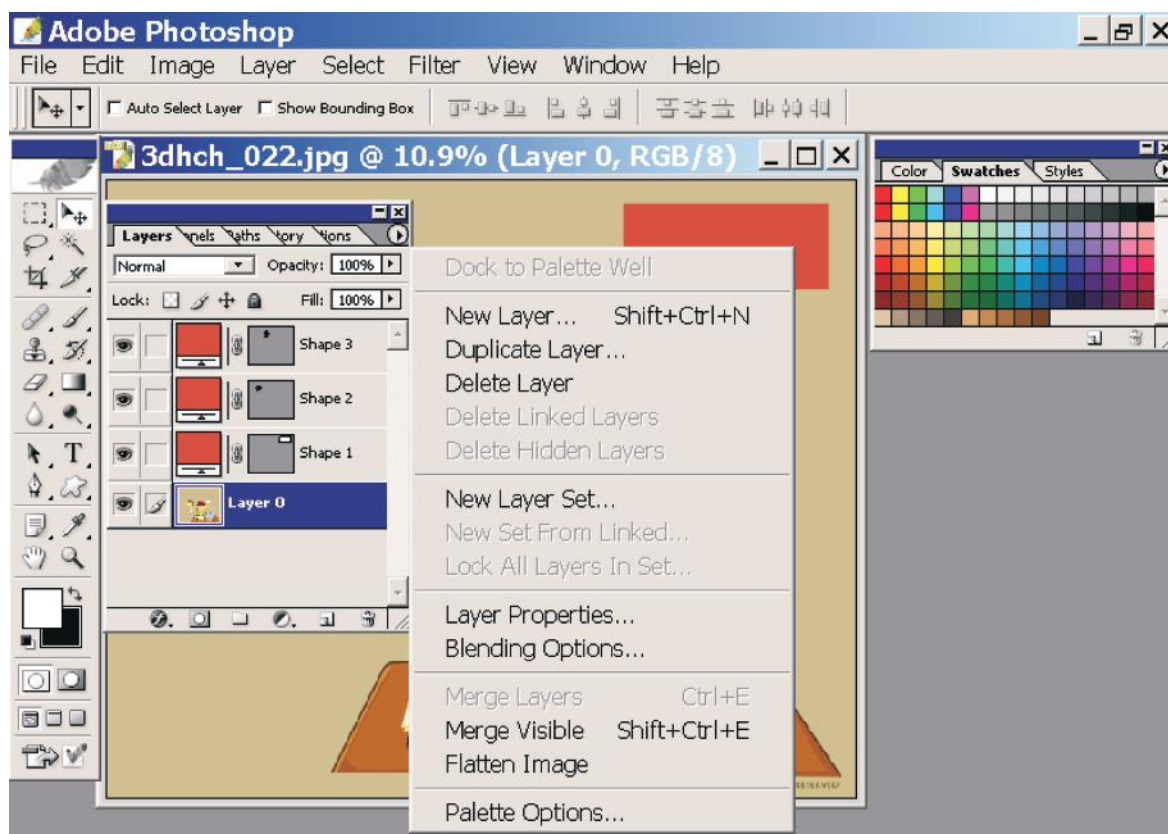
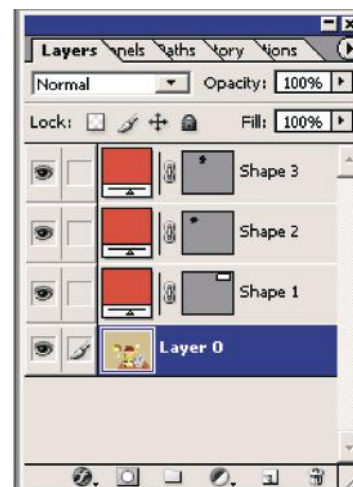
### Layers Palette

There is a Layers palette that lists out all the layers and layer effects in an image.

We can create, hide, duplicate, copy or delete layers by using the menu that appears when you right click the Layers palette.

### Commands for Working with Layers

To get various commands for working with layers, we click on the arrows in the upper right corner of the layers palette.



## Adding a New Layer

There are two ways to add a new layer :

### The layer option

**Step 1 :** From the Layers menu, click on New.

A menu appears.

**Step 2 :** Choose New layer/ Layer set option.

A new layer appears.

A dialog box also appears that (prevent overlapping) helps you to specify options like colour, mode etc.



From the New Layer button/New Layer Set button in the Layers Palette.





## How to Select a Layer?

**Step 1 :** Click on a layer in the Layers palette.

**Step 2 :** Right click on the Photoshop icon in the Layers palette.

A menu opens up that allows you to show/hide all layers or the selected layer.

## Changing the Order of Layers

We can choose to do so by any one of the following methods :

### By using the Layers Palette

We can change the order of layers by dragging and shuffling the layers in the Layers palette.

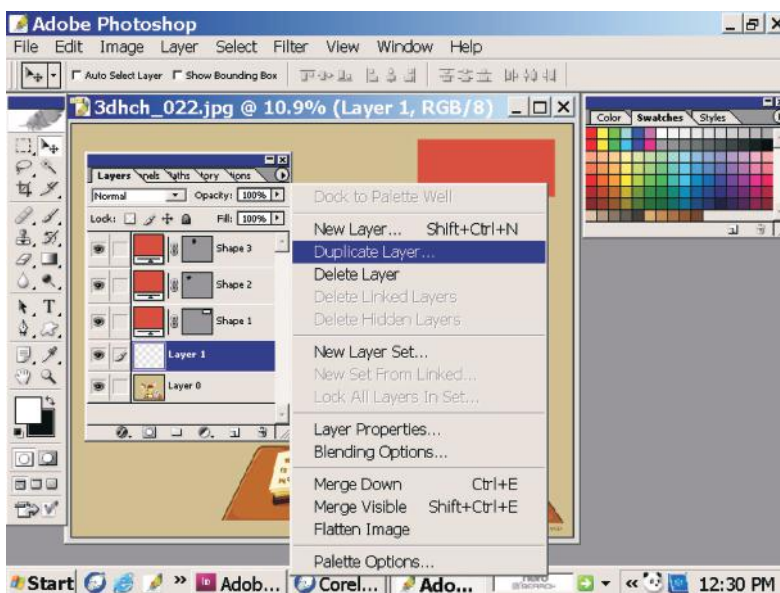
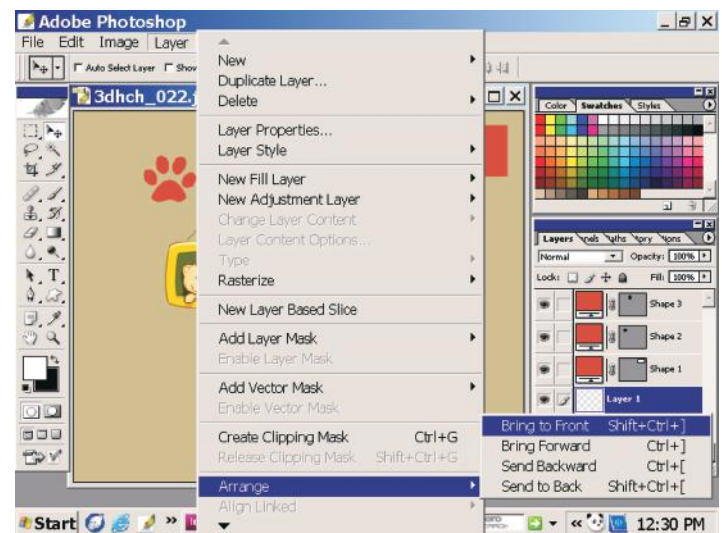
### By using the Layers Menu

**Step 1 :** Choose Layer from the menu bar.

**Step 2 :** Select Arrange.

A drop down menu appears from which you can choose to send a layer back or in front.

## Duplicating a Layer or Layer Set while Making an Image



We can make duplicate layers in many ways.

### From the Layers Palette

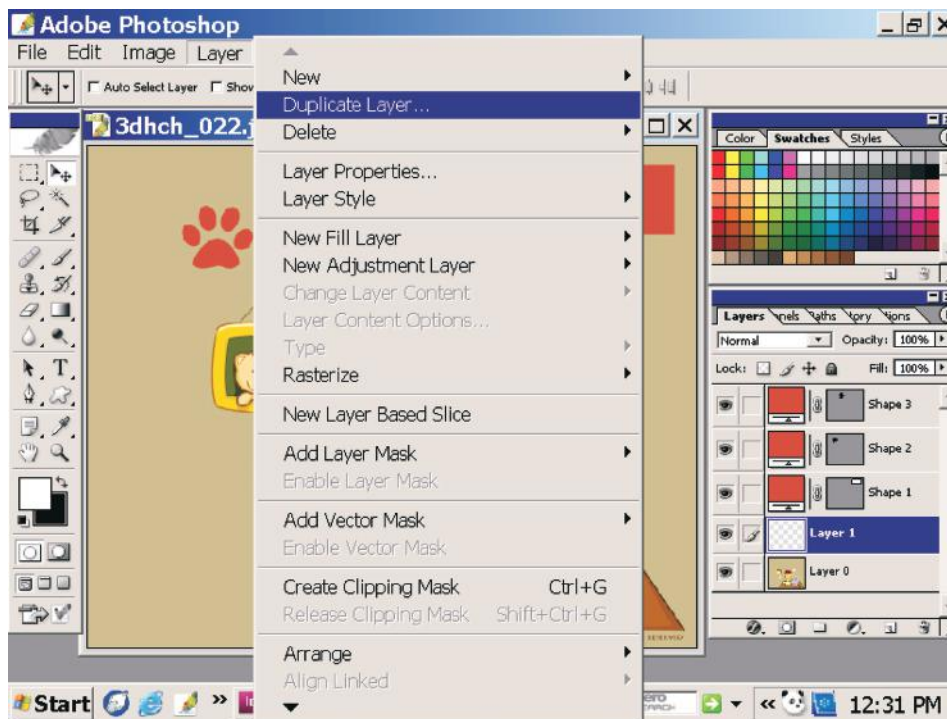
**Step 1 :** Click on the arrows in the upper right corner of the Layers palette.

A drop-down menu appear with option.

**Step 2 :** Click on Duplicate layer.

## From the Layers Menu

Click on Duplicate layer from the drop-down menu.



### Remember

Always remember, in a stack of layers, the background layer is always at the bottom of the stacking order. Therefore, the “send to the back” command places the selected layer directly above the background layer.

## THE FILTERS MENU

The filters menu has several filters to choose from.

### Tips on Handling Filters :

- You can apply filters only to an active layer.
- Some filters work only in the RGB colour images.
- The last filter chosen gets displayed on top of the menu.
- Some filters have the option of showing a preview of the image before they are applied.

### How to Apply a Filter?

**Step 1 :** Select the area where you want to apply a filter.

If you want to apply a filter to the whole layer, do not select the image.

**Step 2 :** Choose the desired filter from the Filter menu.

There are many filter effects that you can choose from.

**Step 3 :** All filters show submenus to choose from by clicking on the little triangle alongside.

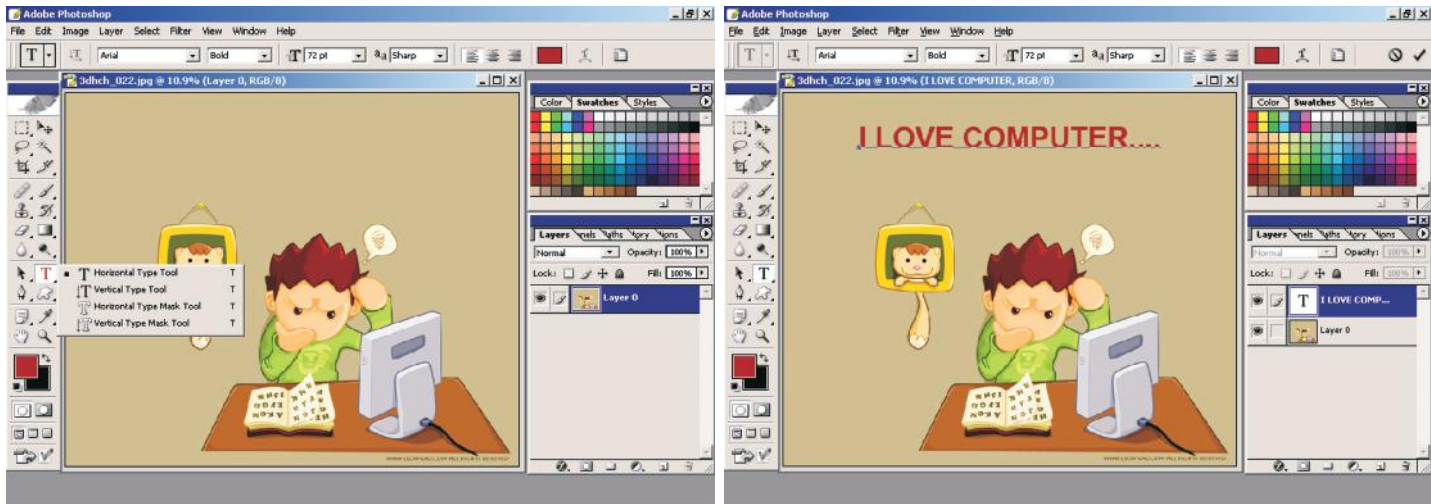




## TEXT TOOL

To type text, simply click on the Text tool in the tool box. A submenu opens for you to choose how you want to insert text.

- Type the text in the desired space.
- This also forms a layer. You can edit text using the text palette.
- The font can be formatted for the font style, size, colour, making it bold, underline, italics, subscript, superscript, and even strike through.



- Clicking on the paragraph tab in the text palette helps you to align and indent text.
- You can move the text layer anywhere. To do so, select the text by double clicking it.
- Move the cursor to the corner till the handles become square boxes. Now you can move the layer and place it anywhere.
- Click inside the text box again to get rid of the box.

## Points to Remember

- Photoshop is a graphical program that we use to create a new image or modify existing ones, as bitmap or vector images.
- For a new page, we choose the settings like name, size, resolution and mode.
- There are various kinds of tools in the Photoshop tool box, which help us to create and edit images. These are—selection tools, painting tools, view tools and path, text and shape tools.
- The magic wand helps us to select parts of an image, which are similar in colour.
- The marquee tool helps us to select a part, or parts of an image, when dragged over them.
- The Lasso tool allows free hand selection of a part of an image. There are three type of lasso tools—simple, polygonal, and magnetic lasso tools.
- Photoshop comes with some preloaded shapes. They are found in the custom shape tool.
- We work in layer in Photoshop. Each layer of an image is stacked one on top of the other, in such a manner that any change made in one layer does not effect the other.

## EXERCISE



### A. Tick (✓) the correct option :

1. Which tool help us to select parts of an image?  
(a) Crop tool  (b) Lasso tool  (c) Marquee tool
2. Which tool allows free hand selection of a part of an image?  
(a) Magic wand  (b) Marquee tool  (c) Lasso tool
3. Marquee tool is a type of \_\_\_\_\_.  
(a) Selection tool  (b) Painting tool  (c) View tool
4. Which tool is used to select the part of an image, which are similar in color?  
(a) Lasso tool  (b) Marquee tool  (c) Magic wand tool
5. In Photoshop where does preloaded shapes find?  
(a) custom shape tool  (b) Selction tool  (c) Drawing tool

### B. Fill in the blanks :

1. The \_\_\_\_\_ tool helps to make free hand selection.
2. \_\_\_\_\_ is used for applying brush stroke to an image.
3. The \_\_\_\_\_ wand helps us to select parts of an image, which are similar in colour.
4. The \_\_\_\_\_ tool helps us to select a part or parts of an image, when dragged over them.
5. In Photoshop, we can create an image in the form of \_\_\_\_\_ .
6. When we edit a layer, images on the other layers \_\_\_\_\_ gets disturbed.

7. In a stack of layer, the \_\_\_\_\_ layer is always at the bottom.
8. While making an image, we can apply filters to \_\_\_\_\_ layer.

**C. Write (T) for true and (F) for false :**

1. In the bitmap image, the image gets converted into a two color image.
2. In the photoshop, we cannot move toolbox.
3. There are four kinds of tools in the Photoshop toolbox.
4. The rubber stamp tool is a type of selection tool.
5. The magic wand tool is used to select parts of an image, which are similar in color.

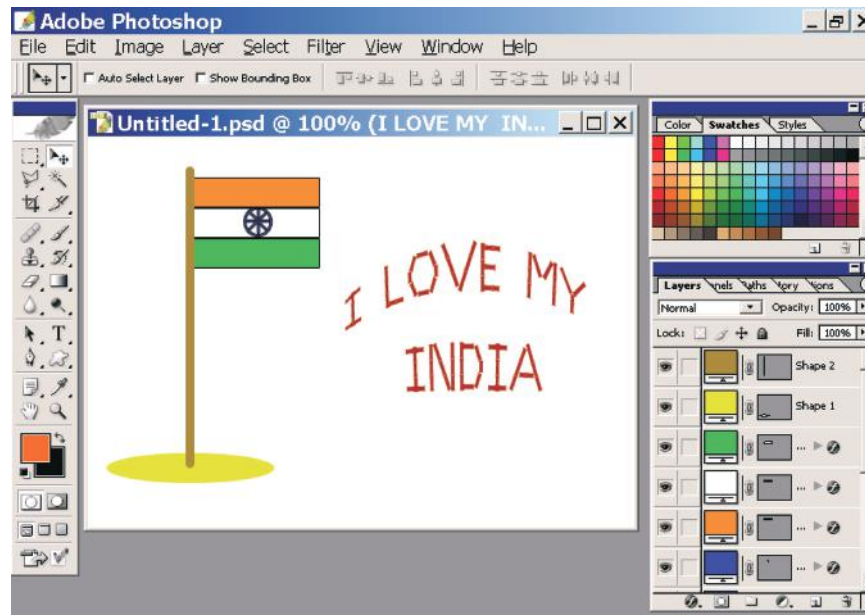
**D. Answer the following Questions :**

1. What kind of software is Photoshop?
2. What are the kinds of images that are created in Photoshop?
3. Define resolution.
4. How do we create a new file in Photoshop, describing all the specifications that need to be given?
5. List out the different selection tools used in Photoshop.
6. What are foreground and background colour?



## ACTIVITY

**1. Make a given image in photoshop.**



**2. Use Autoshapes to insert any two pre-loaded shapes in a layer. Fill colours in them, and then apply the following :**

- a. Stained glass effect to one.
- b. Blur effect to the other.