

# Safety Rules

# 8



## SAFETY RULES

Accidents take place when we are careless. We should follow **safety rules** to avoid accidents and getting hurt.

### At Home

- Do not touch sharp objects like knives, pins and scissors.
- Do not play with matchsticks. You may burn yourself.
- Do not touch electric switches and sockets with wet hands. You may get an electric shock.



*Zebra Crossing*



*Boy playing with scissors*



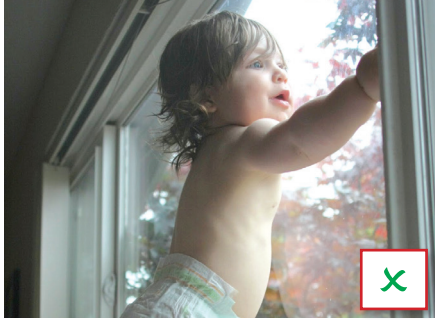
*Girl playing with matchstick*



*Boy touching the socket*

- Do not climb on the window-sill. You may fall down.
- Do not leave your toys on the floor. You or someone else may trip over them and fall.

- Do not touch hot objects like iron or gas stove.



*A boy standing on a window.*



*Toys lying on the floor*



*A girl touching a cooking stove*

## At School

- Never run while going up or down the staircase.
- Do not stand on desks and chairs.
- Do not run in the corridors.
- Never fight with others or bully them.
- Always stand in a queue while boarding the bus.
- Get in or off the bus only after it has stopped.



*walking in a line*



*Student's school bus*



*Students in school bus*

## While Playing

- Do not play on the roads and the streets.
- Do not play with broken toys. They might hurt you.
- Do not play or hide in dark or lonely places.

- Do not push or pull each other off the swings.
- Never stand in front of a moving swing.



*Children playing on the road*



*A boy pushing the other boy*

## On the Road

- Always walk on the footpath.
- Cross the road at the zebra crossing.

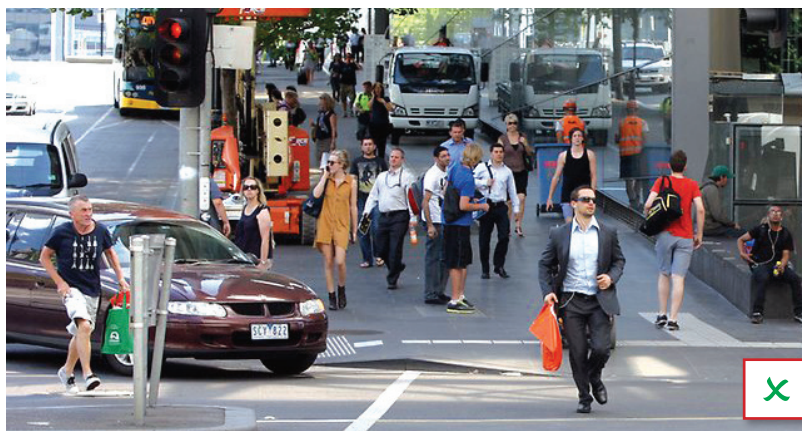


*People walking on footpath*

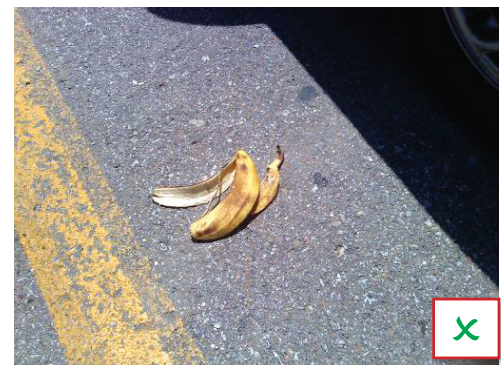


*Kids crossing the road at zebra-crossing*

- Do not play or run on the road.
- Before crossing the road, look to your right, then to your left and then to your right again.



*People crossing road before the signal turns green*



*Banana peel on the road*

- Always ride your bicycle on the left side of the road.
- Do not throw banana peels on the road.

## Test your Self

- Write two safety rules you should follow in each of the given places :

1. home : \_\_\_\_\_  
 \_\_\_\_\_

2. school : \_\_\_\_\_  
 \_\_\_\_\_

3. playground : \_\_\_\_\_  
 \_\_\_\_\_

### While Swimming

- Do not go alone for a swim. Go to swim with elders.
- Do not go near the deep end of the pool.
- Use a swimming tube if you do not know how to swim properly.
- Do not pull or push anyone inside the swimming pool.
- Do not swim when you have a cough or cold.



### FIRST AID

First aid is the immediate help given to an injured person before the doctor arrives.

- If a person falls down, run and help him.
- If he/she is hurt, take him/her to a clinic or hospital.
- If someone is bleeding badly, make him/her lie down and tie a tight bandage around the wound.
- In case of any emergency, do not panic. Inform your teacher or parents quickly.





## Know the Keywords :

Safety rules	:	Rules followed by us to keep us safe.
Clinic	:	A place where doctor gives treatment to the patients.
Panic	:	Feeling of fear and anxiety.

## Point to Remember

- We should always follow safety rules at home, school, in a playground, on the road, in the vehicle and at a swimming pool.
- Always walk on the footpath.
- Do not get in or out of a moving bus.
- Do not play on the roads and the streets.
- Do not play with sharp things.
- Do not play near a pool.

## EXERCISE TIME

### A. Multiple choice questions (MCQs).

Tick (✓) the correct option :

1. We should always walk on the \_\_\_\_\_.  
a. footpath  b. middle of the road  c. boundary
2. We should always go for swimming \_\_\_\_\_.  
a. with elders  b. all alone  c. with small kids
3. We should use the \_\_\_\_\_ to cross the road.  
a. zebra crossing  b. footpath  c. rickshaw
4. We should never play with \_\_\_\_\_.  
a. fire  b. toys  c. friends

### B. Fill in the blanks :

1. Do not get out of a \_\_\_\_\_ bus. (moving/still)

2. Do not touch electric switches with \_\_\_\_\_ hands. (wet/dry)
3. Use a \_\_\_\_\_ if you do not know how to swim properly.  
(swimming tube/umbrella)
4. Do not play on/in the \_\_\_\_\_. (road/playground)

**C. Answer the following questions :**

1. What should we do before crossing a road?

\_\_\_\_\_

2. Write two safety rules that you must follow at home.

\_\_\_\_\_

3. Write two safety rules to be followed while playing.

\_\_\_\_\_

4. List any two safety rules to be followed while swimming.

\_\_\_\_\_

5. What is first aid?

\_\_\_\_\_

## Activity Time



- Draw a picture of traffic light :