

Plants Around Us

2

Plants are living beings.

There are many kinds of plants around us.

Some are big, some are small.

Some are very big and tall.

TREES (BIG PLANTS)

Some plants grow bigger and stronger. They are called trees.



Neem Tree



Banyan Tree



Mango Tree

Trees have broad stems.

Trees stand up straight.



Ashoka Tree



Palm Tree

Most trees have branches such as Banyan tree, Mango tree, Neem tree.

Some trees do not have branches, such as Ashoka tree and Palm tree.

Test your Self

- Fill in the blanks with correct words :

1. Mango and neem are two big _____. (herbs/trees)
2. _____ have soft and weak stems. (shrubs/herbs)
3. Plants make our surroundings _____. (dirty/beautiful)

CLIMBERS

Climbers have weak stems.

They cannot stand on their own.

They need support to stand.

Grape vine and money plant are **climbers**.



Money Plant



Grapevine

CREEPERS

Creepers are plants that creep along the ground.

Creepers have weak stems.

Creepers cannot stand erect.

Creepers spread on the ground.

Watermelon and pumpkin are **creepers**.



Watermelon



Pumpkin

Do You Know ?

Banyan is the national tree of India.

THORNY PLANTS

Thorny plants have thorns.

Thorns are hard and pointed.

Thorns protect them from animals.

Cactus has thorns all over it.
Rose is a beautiful flower with lots of thorns.



Cactus



Rose



Spinach



Sunflower

HERBS

Herbs are small plants.

They have soft tender stems.

SHRUBS

Shrubs are bushy plants.

Their branches are closely knit.

Their stems give off branches at ground level.

They live for some years.



Cotton plant



Rose plant

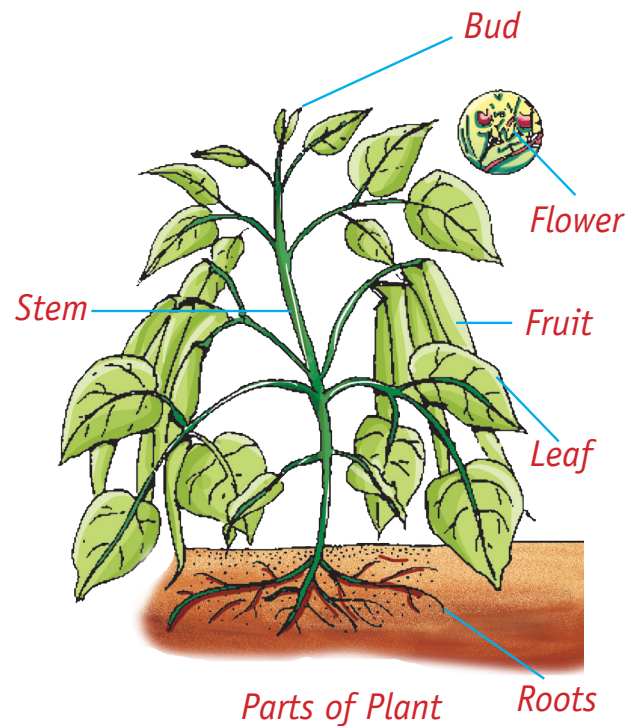


LEAVES

Most plants look green because of their leaves. Leaves are green in colour. Different plants have different leaves. Leaves are of many sizes and shapes.

Parts of Plants

1. **Roots** : Roots suck water from the soil and give support to the plant.
2. **Stem** : It helps the plant to exact stand.
3. **Flowers** : These are the most beautiful part of a plant.
4. **Buds** : Flowers grow from buds.
5. **Leaves** : They prepare food for plants.
6. **Fruits** : Flowers change into fruit. Fruit contains seeds inside it. Seeds grow into new plants.

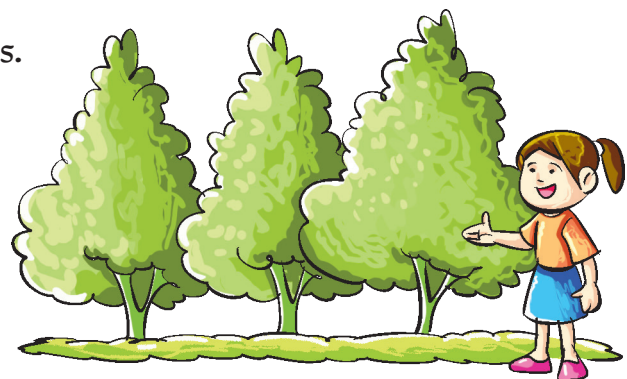


Know the Keywords :

Trees	: Big, tall and strong plants.
Shrubs	: Plants smaller than trees.
Herbs	: Small and weak plants.
Climbers	: Weak plants that need support to remain erect and climb.
Creepers	: Weak plants that grow along the ground.

Point to Remember

- These are many kinds of plants around us.
- Some plants are big and some plants are small.
- Big and strong plants are called trees.
- Small but strong plants are called shrubs.
- Plants with soft stems are called herbs.
- Climbers and creepers are weak plants.
- Some plants have thorns.
- All plants have leaves.
- Leaves are of different sizes and shapes.



EXERCISE TIME

A. Multiple choice questions (MCQs).

Tick (✓) the correct option :

- Leaves are _____ in colour.
a. green b. yellow c. white
- The stem of tree is called _____.
a. leaves b. trunk c. roots
- Watermelon is a _____.
a. creeper b. herb c. shrub
- Plants that grow and spread along the ground are called _____.
a. herbs b. creepers c. climbers

B. Tick (✓) the correct and cross (X) the incorrect ones :

- All plants grow tall and straight.
- Some plants are small.
- Grape-vine is a climber.
- Watermelon is a creeper.

C. Match the following :

- | | |
|-------------------|------------------------|
| 1. A climber | a. Big and tall plants |
| 2. Trees | b. Sunflower |
| 3. A thorny plant | c. Money plant |
| 4. A herb | d. Rose |

D. Fill in the blanks with the given words :

cactus, climbers, shrubs, herbs

- Rose and Jasmine are _____.
- Tulsi and Sunflower are _____.
- Grape-vine and Money plant are _____.
- _____ is a thorny plant.

E. Put the following into correct columns :

Banyan, Neem, Rose, Mango, Sunflower, Brinjal, Wheat, Jasmine

Tree	Shrub	Herbs

F. Answer the following questions :

1. What are trees?

2. What are creepers?

3. What are herbs?

4. Give one difference between a tree and a shrub.

Activity Time



- Collect the leaves of different plants. Press and paste them in your album or scrapbook.



Creative Work

- Make a list of big plants and small plants which grow around your house.
- Choose a tree in your garden. Draw into a paper. Now bring some of its leaves. Make the trunk and branches with brown glaze paper. Paste the leaves on them. Let the picture dry. Write the name of the tree below the picture and display it.